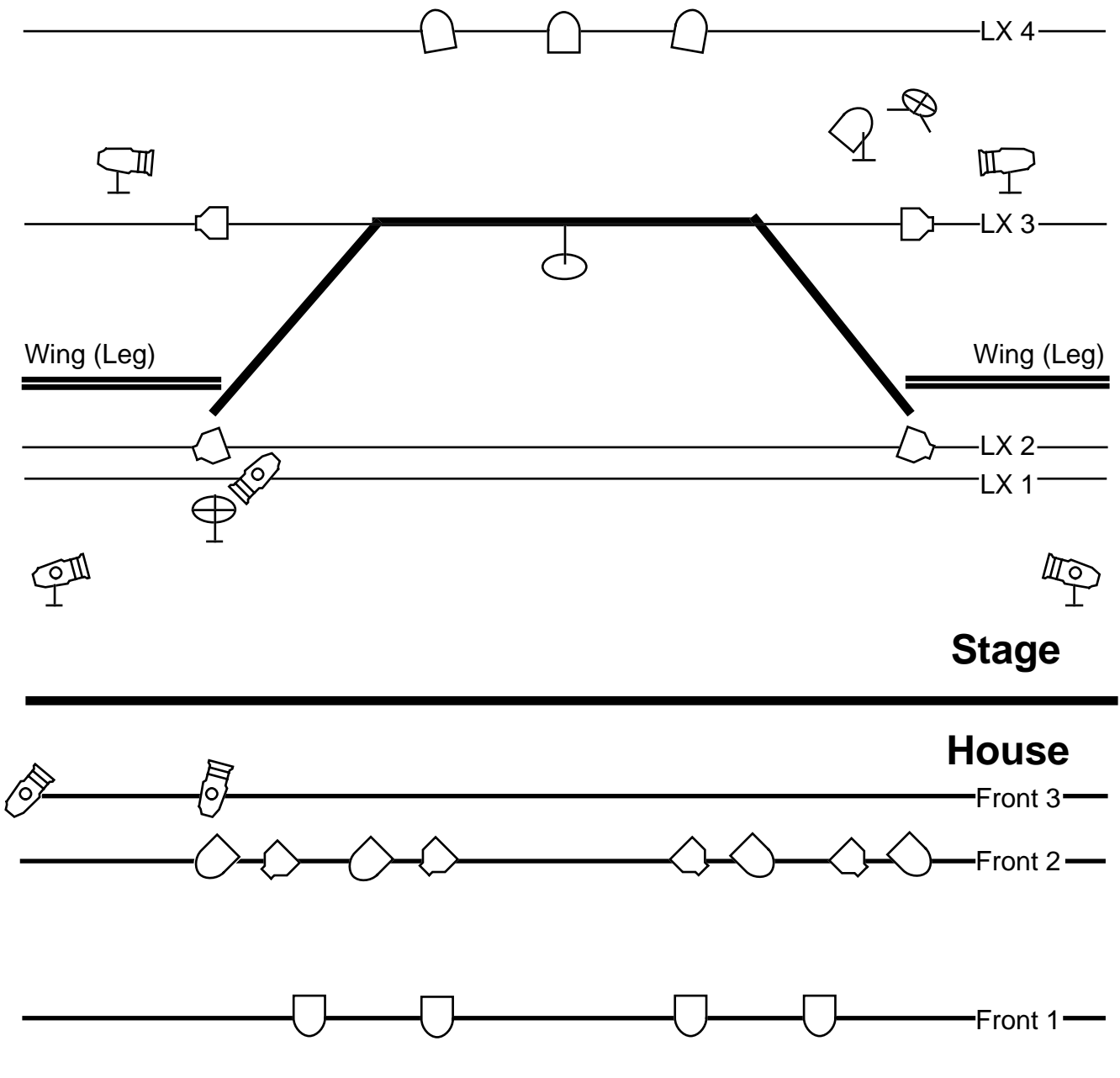
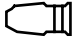



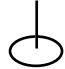


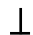


# Under Construction (by DAVAI)



Key	
	25-50° Source Four Zoom (or 36°)
	LED PAR RGBW
	PAR-64 Medium Flood (MFL)
	Iris

-  Lamp (prop) - dimmer/channel
-  Ventilator 1 (prop) - dimmer/channel
-  Ventilator 2 - dimmer/channel
-  Floor stand

# UNDER CONSTRUCTION

## TECHNICAL RIDER

### VENUE

- Min. stage dimensions – 5X5X3
- Black box: black backdrop, floor, wings
- 2 black legs to cover from the sides of the set (3.5 m wide) to the wings

### SET

- 3.5m W x 2.5m D x 2m H
- Set doesn't need to be attached to floor or to bars
- Carpet needs to be taped to the floor

### SOUND

- Stereo PA according to venue.
- 2 monitors - 1 on each side.
- Condenser microphones Crown PCC-160 - 3 units.
- Top condenser microphones - 2 units (preferable Sennheiser).
- Lavalier lapel wireless condenser microphone - 1 unit (preferable Sennheiser).
- DI Box - 1 unit
- Mixing console with the number of channels according to the number of lines above + 1 stereo channel (for the soundtrack, Ableton Live laptop console supplied by artist).

### LIGHT

- PAR-64 Medium Flood (MFL) - 12 units (1 - on a floor stand).
- LED PAR RGBW 36 degrees - 8 units.
- Profile Spot 36 degrees - 7 units (5 - with the iris, 4 - on a floor stand).
- 2 separate dimmer sockets on stage (for the props: lamp & ventilator, supplied by artist).
- Fog machine 1500 W (not haze) with a horizontal pipe (DMX control) - 1 unit.
- Haze machine with ventilator (DMX control) - 1 unit.

\* Every non-DMX spot/projector must be plugged on a separate channel/address at dimmer.

\* All the light set must be connected in one DMX universe.

\* 9 PARs-64 could be replaced with the 3 additional Profile Spots 36 degrees and 6 PC 1000 W.

\* M-PC laptop light console supplied by artist.

\*\* If LED lights are unavailable, please notify our technical manager ASAP.

**POWER ON STAGE**

220 v, 2 lines direct (and 2 lines dimmer - see the light set)

**TECHNICIANS**

Venue provides light and sound technicians.

Company provides 1 light&sound operator.

**SET UP TIME INCLUDING LIGHTS**

7 hours

**DISASSEMBLY**

1.5 hours

**PROPS**

1 table (to be build or found locally), 2 suitcases of small props, 2 suitcases of set, all can be transported on plane. Total weight = 80 kg.

**SPECIAL EFFECTS**

1x 10pack wire sparklers per show, 4 cake sparklers per show, 2 streamer party poppers (confetti) per show

**BACKSTAGE**

working light, 3 tables 60x120cm for props, 4 chairs.

**DRESSING ROOM**

3 chairs, mirror, toilet, shower, 3 bottles of mineral water 0,5 l., dryer for wet costumes, hot tea.

**TECHNICAL MANAGER CONTACT FOR INQUIRIES**

Ilya Gerchikov: [info@davai-group.org](mailto:info@davai-group.org)